

Internacional Marítima



About Us



MISSION, VISION AND VALUES

Mission

Continuously generate value.

Vision

To be a reference as a provider of solutions in the maritime and service segments.

Values

Ethics, Transparency, Integration, Innovation, readiness for change, results with Excellence, Respect for Life and Organizational Mentality.

Company



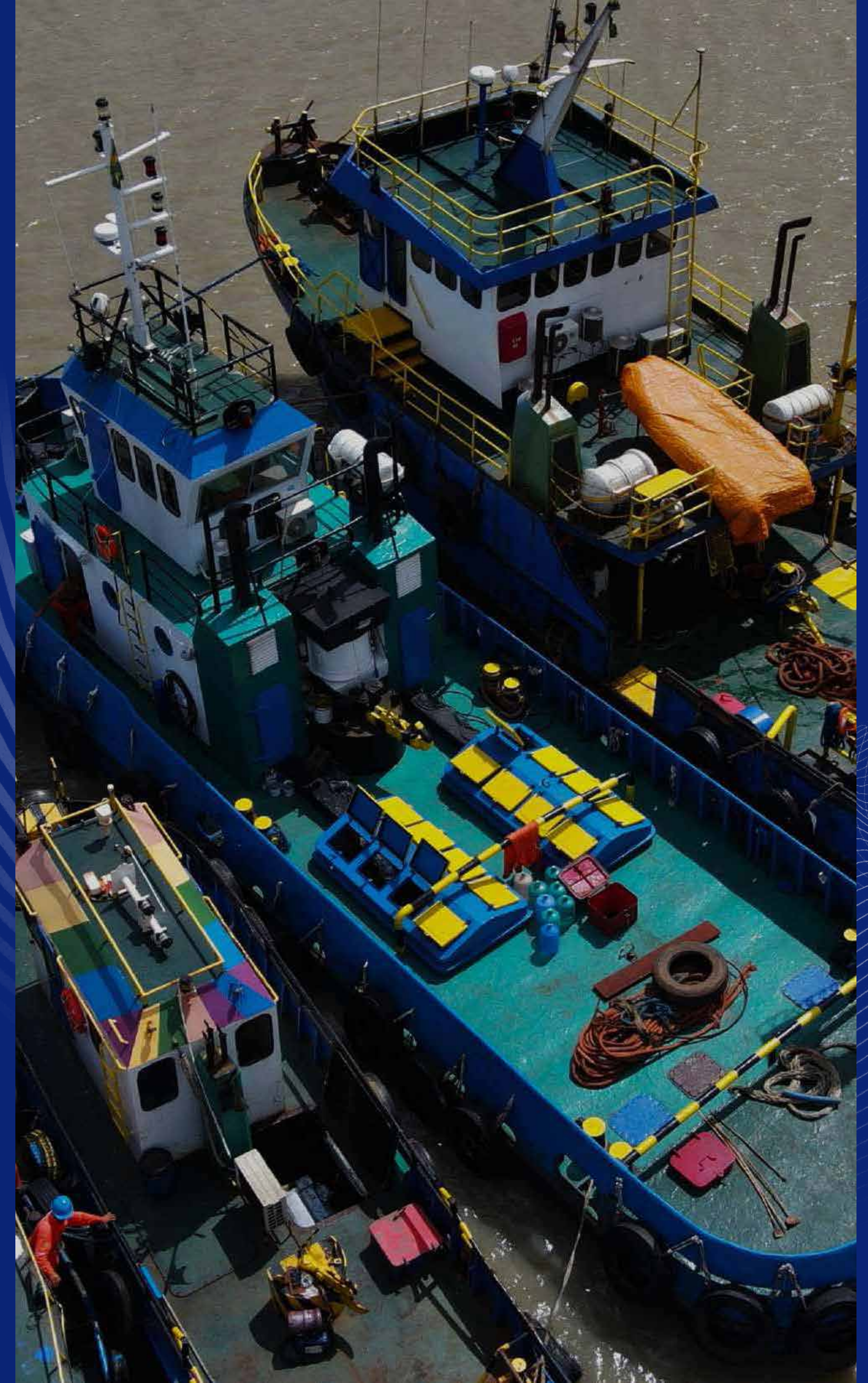
Internacional Marítima Ltda was founded in 1988, headquartered in São Luís - MA. This is a shipping company, provider of shipbuilding and maritime construction services, and operates in various activities related to the maritime sector, such as: operating vessels (own and third parties), supplying qualified maritime labor, mooring, unmooring, berthing and unberthing of ships, shipbuilding, among other maritime and port services.

It has know-how, maturity, tradition, excellence in the execution of services, and reliability, the latter acquired over time and recognition from its customers.

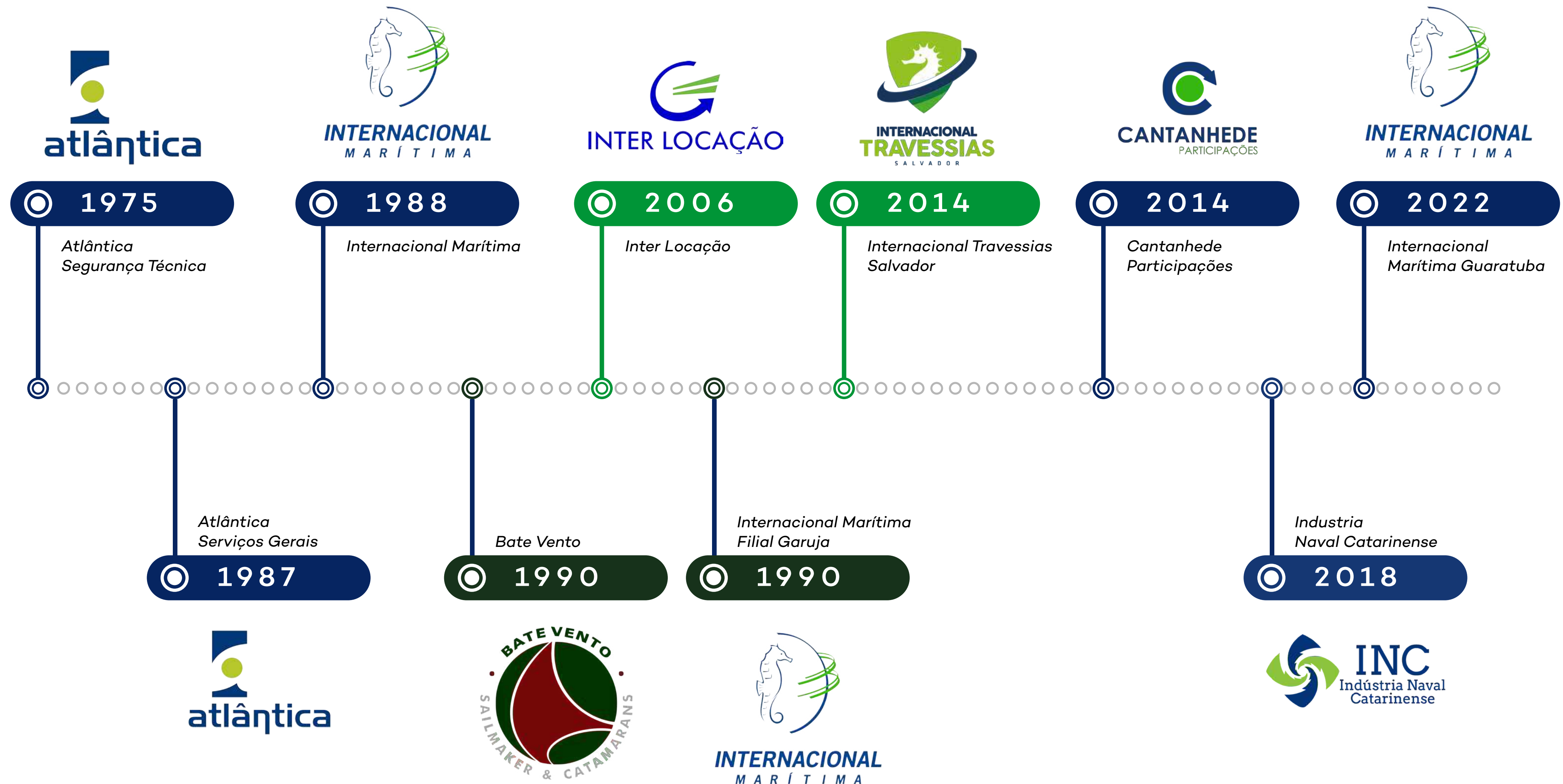
Company

With around 1,900 qualified employees, the company is directly involved in the operation of more than 70 vessels throughout the country, of which 32 are owned by the company, operating in the following states: Maranhão, Pará, Paraná, São Paulo, Rio de Janeiro, Bahia and Santa Catarina. In each of these locations, the company has a highly qualified team.

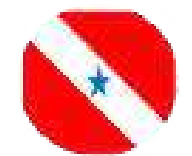
The company has expertise in the operation of vehicle and passenger waterway transport systems. The system of coastal crossings in the state of São Paulo is highlighted, consisting of eight crossings: Santos/Guarujá, Bertioga/Guarujá, São Sebastião/Ihabela, Iguape/Juréia, Cananéia/Ilha Comprida, Cananéia/Continente, Santos/Vicente de Carvalho and Cananéia/Ariri. With a fleet of 34 vessels, including speedboats and ferry boats, the system has an average daily volume of 18,000 pedestrians, 10,000 cyclists and 29,000 vehicles. In addition, Internacional Marítima operates crossings in the states of Maranhão, Bahia, São Paulo (EMAE and CESP) and Paraná in the emergency contract regime of Guaratuba Bay.



Companies



Operations



Pará



Maranhão



Bahia



São Paulo



Rio de Janeiro



Paraná



Santa Catarina



Maritime transport of
passengers and vehicles.

MARANHÃO

CROSSING:
Ponta da Espera - Cujupe



2019

- 469 /DAY
- 14.064 /MONTH

2020

- 396 /DAY
- 11.889 /MONTH

2021

- 484 /DAY
- 14.524 /MONTH

2022

- 448 /DAY
- 13.612 /MONTH



2019

- 2.568 /DAY
- 77.034 /MONTH

2020

- 2.105 /DAY
- 63.159 /MONTH

2021

- 2.699 /DAY
- 80.979 /MONTH

2022

- 2.231 /DAY
- 67.882 /MONTH



FERRY BOAT ALCÂNTARA



FERRY BOAT CIDADE DE CURURUPU



FERRY BOAT CIDADE DE PINHEIRO



FERRY BOAT BAÍA DE SÃO MARCOS I



Maritime transport of passengers and vehicles.

BAHIA

CROSSING: Salvador – Itaparica



Em dias normais
(média do mês geral)

- 2.000 /DAY
- 60.000 /MONTH

Em feriados maiores como São João e Ano Novo, por exemplo:

- 6.000 /DAY
- 180.000 /MONTH



Em dias normais
(média do mês geral)

- 15.000 /DAY
- 450.000 /MONTH

Em feriados maiores como São João e Ano Novo, por exemplo:

- 45.000 /DAY
- 1.350.000 /MONTH



Maritime transport of
passengers and vehicles.

SÃO PAULO

CROSSING:
EMAE (Desde 2015)



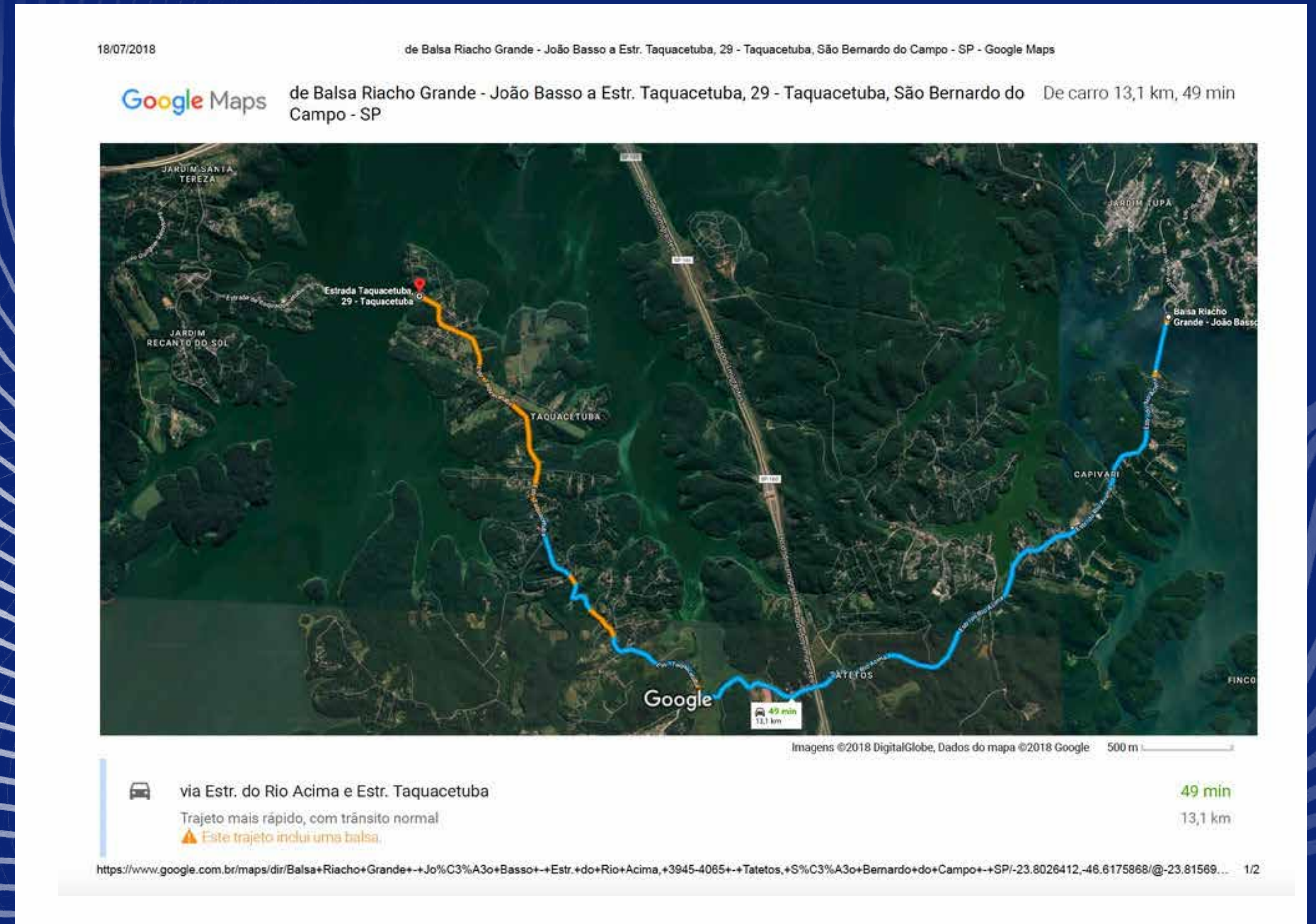
Média do mês geral

- 5.265 /DAY
- 157.950 /MONTH



Média do mês geral

- 4.674 /DAY
- 140.220 /MONTH



EMAE - Empresa Metropolitana de Águas e Energia SA, crossings located in the Billings Reservoir, south zone of the City of São Paulo and in São Bernardo do Campo, called: “Bororé Crossing”, “Taquacetuba Crossing” and “João Basso

Crossing”

(Service Provision Agreements)

Maritime transport of passengers and vehicles

SÃO PAULO

CROSSING:
DH SP (Desde 2018)



Média do mês geral

- 369 /DAY
- 11.070 /MONTH



Média do mês geral

- 655 /DAY
- 19.650 /MONTH



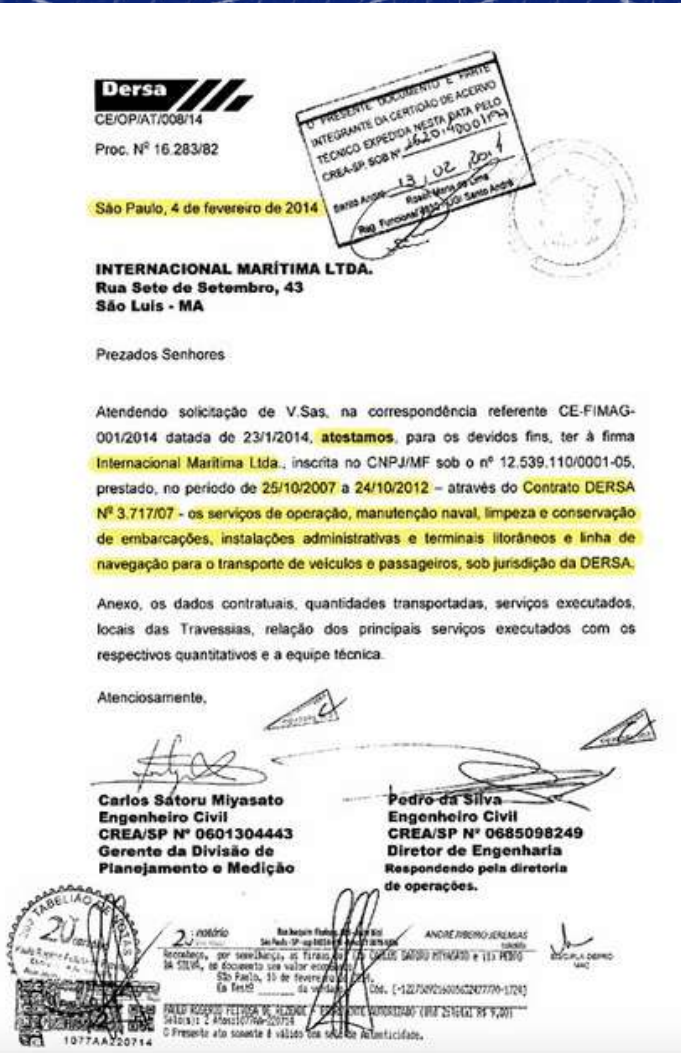
CESP - Companhia Energética de São Paulo, crossings located between the counties of Paraibuna and Natividade da Serra, called: “Paraitinga Crossing”, “Varginha Crossing” and “Natividade da Serra Crossing”.
(Service Provision Agreements)

Maritime transport of passengers and vehicles.

SÃO PAULO

CROSSING: São Paulo Coast

(From 2007 a 2018)



Maritime transport of
passengers and vehicles.

PARANÁ

CROSSING: Guaratuba – Caiobá

(Desde fev. 2022)



Média do mês geral

- 4.557 /DAY
- 136.723 /MONTH



Média do mês geral

- 9.114 /DAY
- 273.446 /MONTH



DER - Highway Department of the State of Paraná, crossing Guaratuba Bay, between Guaratuba and Caiobá.

(Service Provision Agreements)

Services

Operation of
third-party
vessels
- Offshore -



Services



Supply of skilled
labor
for maritime
services
and port industry



Services

Shipbuilding, ship
repair and
maintenance



Services

Operation of
third-party
vessels
- Port Support-



Services

Mooring and
unmooring of
ships and
nautical signaling



Services

Nautical Signaling



Provision of Nautical Signaling Operation/Maintenance Services at the Ponta da Madeira Maritime Terminal in São Luís - MA.

Scope of Services

The services run 24/7.

Nautical Signaling

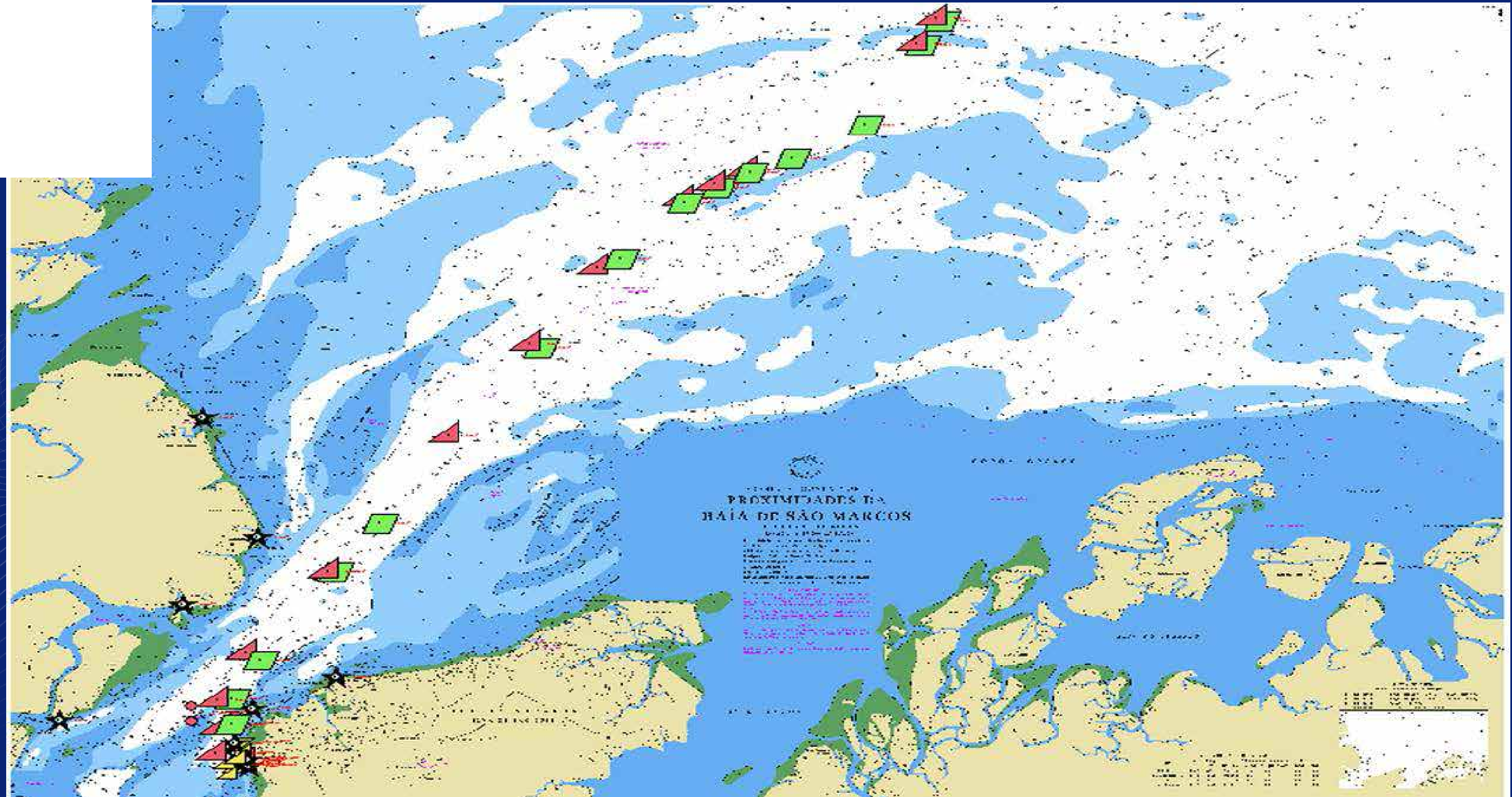
Maintenance services for nautical signaling (floating beacons and fixed signals) on the access channel, extending 15 MN after buoy 1 and the evolution basin of the Ponta da Madeira Maritime Terminal (TMPM), in São Luís - MA.

These services are carried out with the supply of a manned vessel suitable for nautical signaling activities

This vessel is also used to support VALE's bathymetry activities on the piers, access channel, extending 15 MN after buoy 1, evolution basin, Guarapirá basin, dump area, anchorages and surroundings.

Services

Nautical Signaling



Characteristics of the TMPM-Vale São Luís Access Channel

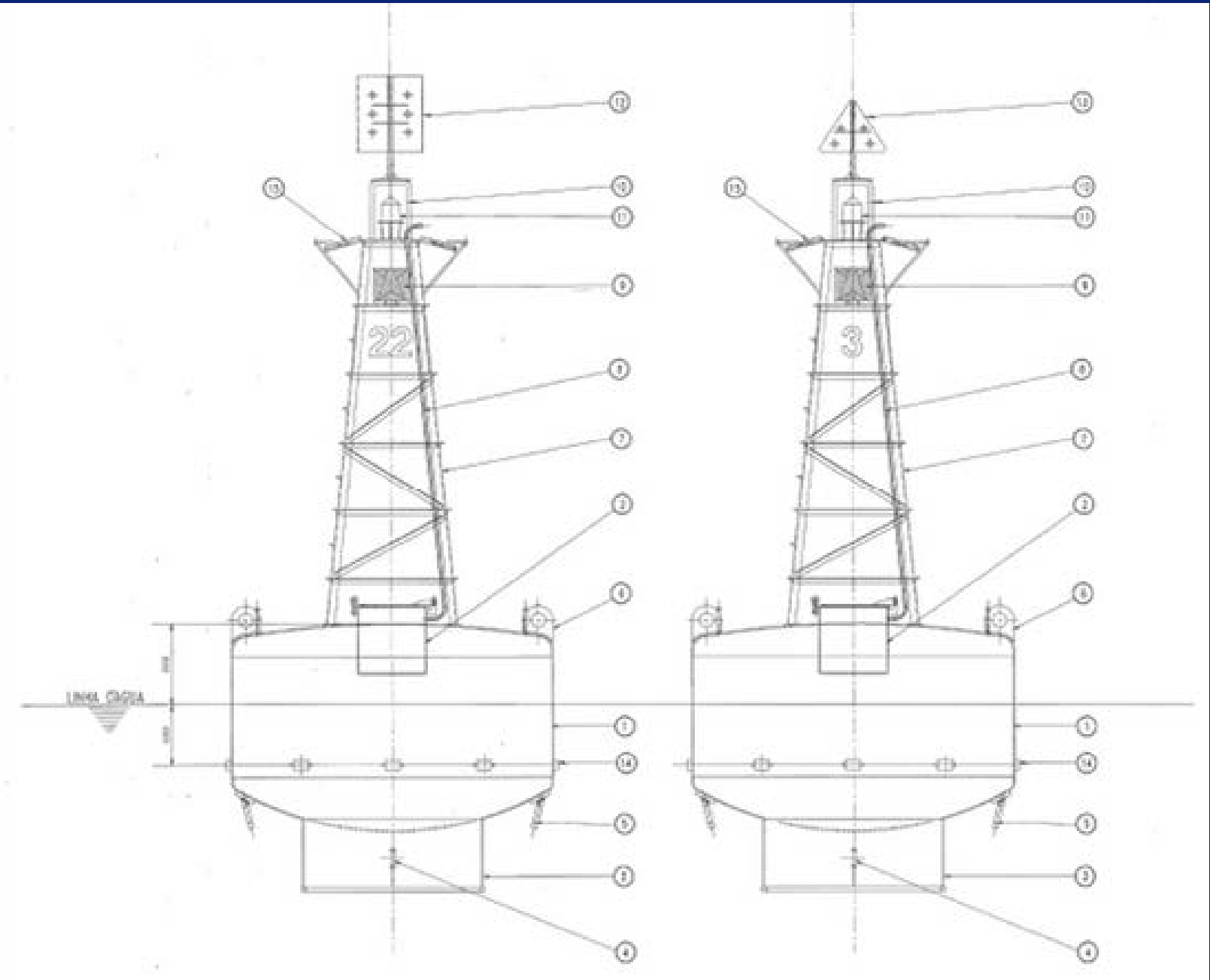
Channel width: 500m (it has narrower points between buoys 05 / 10 and 03 / 04 of the channel).

Channel length: 67 MN.


Services

Nautical Signaling


Polypropylene Buoys




Carbon Steel Buoys




**JET 9000 Q
PF6**




**JET 7000 QI
PF5**



**JET 5000 QI
PF4**



**JET 2500 Q
PF3**



MOBILIS
River and Sea Equipment

Light, modular buoys.
Superstructure assembled from several standard elements in marine aluminum alloy.
Floats in 2 or 4 sections from supple PE or foamed HDPE.
Galvanized steel structure.
A multitude of configurations are available.
Low draft : skirted buoys.
Flat bottom buoys.
Several focal heights and equipments can be used.

Specifications	JET 9000 Q PF6	JET 7000 QI PF5	JET 5000 QI PF4	JET 2500 Q PF3
Application	Sea, Coast	Sea, Coast	Sea, Coast	High Sea, Coastal
Materials	Polyethylene, Aluminum and Steel	Polyethylene, Aluminum and Steel	Polyethylene, Aluminum and Steel	Polyethylene, Aluminum and steel
Markings	Lat., Cross, Card., Danger etc.	Lat., Cross, Card., Danger etc.	Lat., Cross, Card., Danger etc.	Lat., Cross, Card., Danger etc.
Diameter	3 m	2.6 m	2.4 m	1.85 m
Height	12.8 m	9.5 m	8.9 m	6.3 m
Depth	5.3 m	3.4 m	2.7 m	2.4 m
Focal plane	6 - 7 m	5 m	Approximately 5 m	3-2 m
Roll period	approximately 5 s	approximately 7 s	approximately 4 s	approximately 3 s
Buoy weight	2100 kg without ballast	1700 kg without ballast	1500 kg without ballast	750 kg without ballast
Ballast weight	500 kg	500 kg	400 kg	200 kg

Services

Nautical Signaling



Buoy maintenance consists of the following steps:

Overnight inspection to verify the lighting situation of the buoys, when requested by the contractor through online monitoring and in compliance with NORMAM 17;

Inspections in the access channel take place every fortnight, while inspections in the turning basin take place weekly. Both inspections cover daytime and nighttime;

Repair, repositioning of buoys and replacement of electronic components in buoys, at sea;

Maintenance/repair of fixed and floating signs with cutting, welding, surface treatment with sandpaper, washing and painting.

Services

Support in dredging activities



Services

Support in
containment
operations for oil
spills with
containment
booms



Services

Support for
engineering
companies using
tugboats,
speedboats,
crew transport
and barges



Customers



Compagnie Maritime Monégasque





INC
Indústria Naval
Catarinense

The Shipyard

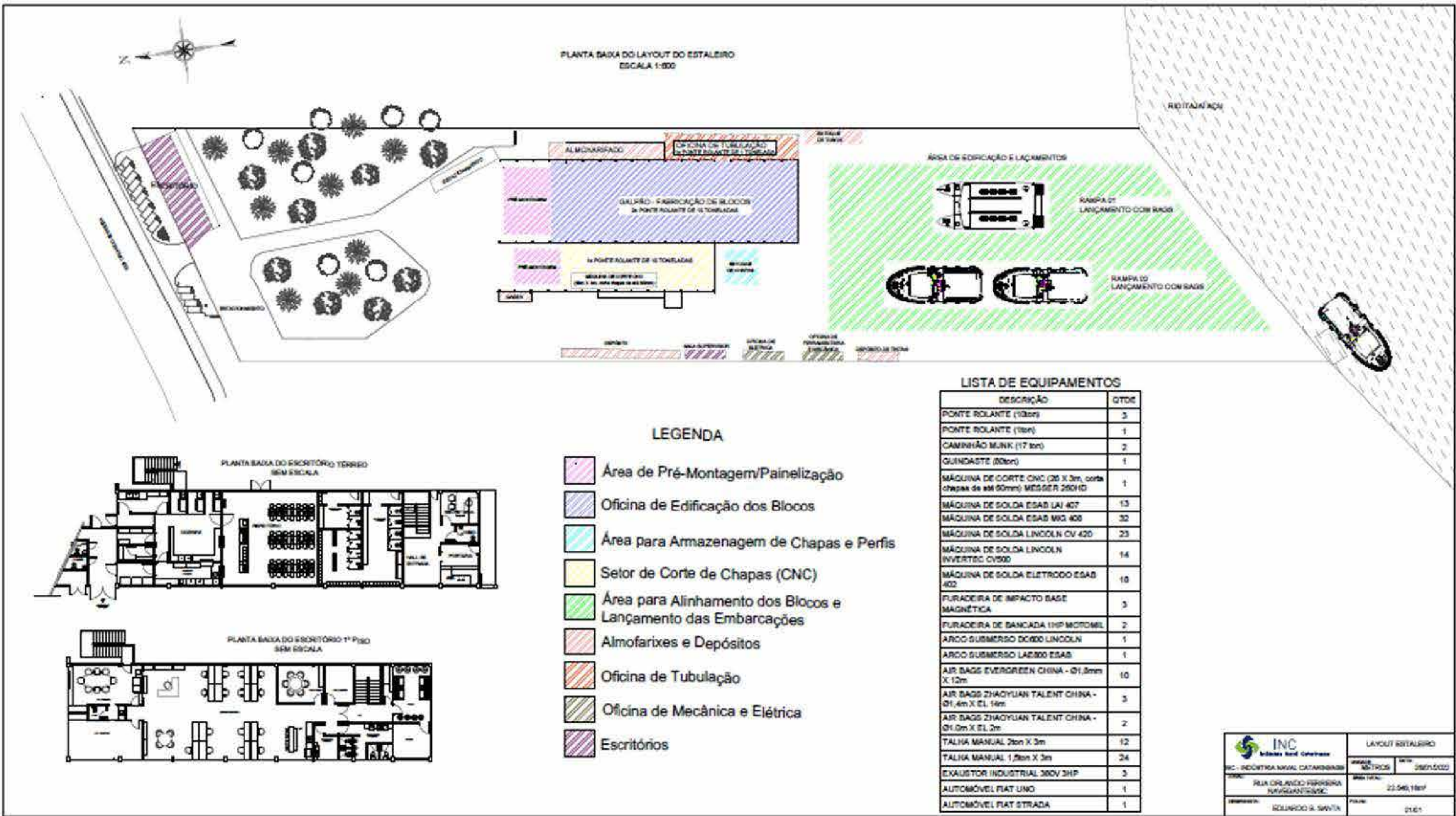
Indústria Naval Catarinense - INC, provides services in the field of naval construction and repair, specific products for vessels, with quality and operational excellence.

The shipyard is located in an area of 30,000m², with 1750m² of covered area, in the city of Navegantes / SC, on the coast of the Itajaí-Açu river, today the center of the Brazilian shipbuilding industry.

Seriousness and responsibility are solid principles that guide INC's actions. Seeking to meet the strict demands of the market, we adopt a management that always offers the best to our customers.



Layout e Machinery



Location

The Naval Industry of Santa Catarina - INC, is located in a region that concentrates large shipyards and the main pole of the metal-mechanical industries of the State of Santa Catarina. The region concentrates skilled labor and available to meet any demand related to the naval area.

Navegantes

- Cranes and Marine Equipment - Huisman Brasil Ltda.
- Shipyard — Keppel Singmarine

Itajaí – 16 km

- Shipyard — Detroit Brasil Ltda.
- Brasil Sul Shipyard (antigo Oceana Estaleiros Ltda)
- Equipamentos Navais — Blenke Manutenção Industrial Ltda.

Joinville — 85 km

- Marine Equipment - Navalsul Equipamentos - Navais do Sul Ltda.
- Marine Equipment - Strahus Tecnologia em Equipamentos Ltda.

Jaraguá do Sul – 89 km

- Electrical Equipment— WEG S.A.

• Blumenau —47 km

- Electrical and Automation Equipment - ABB Transformadores

PROJECT - Floating Dock

Type - Completion of new construction

Vessel - Floating Dock

Customer - Dock Brasil

Project Length - 6 months

Conclusion - May/2016

CARACTERÍSTICAS PRINCIPAIS MAIN CHARACTERISTICS	
CAPACIDADE DE IÇAMENTO (DOCAGEM CONVENCIONAL) LIFTING CAPACITY (CONVENTIONAL DOCKING)	5 000 t
CAPACIDADE DE IÇAMENTO (LOAD-IN/LOAD-OUT) LIFTING CAPACITY (LOAD-IN/LOAD-OUT)	3 000 t
COMPRIMENTO TOTAL TOTAL LENGTH	99,0 m
COMPRIMENTO DO PONTÃO LENGTH OF THE CAISSON	95,0 m
BOCA EXTERNA (MOLDADA) EXTERNAL BREADTH (MOULDED)	30,0 m
BOCA INTERNA LIVRE FREE INTERNAL BREADTH	24,0 m
PONTAL (MOLDADO) DEPTH (MOULDED)	13,2 m

CARACTERÍSTICAS PARA DOCAGEM CONVENCIONAL CHARACTERISTICS FOR CONVENTIONAL DOCKING	
CALADO MÁXIMO DE SUBMERSÃO DO DIQUE (MOLDADO) MAXIMUM DOCK SUBMERGENCE DRAUGHT (MOULDED)	12,0 m
CALADO MÁXIMO ACIMA DOS PICADEIROS (COM FOLGA DE 0,3 m) MAXIMUM DRAUGHT ABOVE BLOCKS (WITH CLEARANCE OF 0,3 m)	6,0 m
ALTURA DOS PICADEIROS DEPTH OF BLOCKS	1,5 m
CARACTERÍSTICAS PARA LOAD-IN/LOAD-OUT CHARACTERISTICS FOR LOAD-IN/LOAD-OUT	
CALADO MÁXIMO DE SUBMERSÃO DO DIQUE (MOLDADO) MAXIMUM DOCK SUBMERGENCE DRAUGHT (MOULDED)	12,0 m
CALADO MÁXIMO ACIMA DOS PICADEIROS (COM FOLGA DE 0,3 m) MAXIMUM DRAUGHT ABOVE BLOCKS (WITH CLEARANCE OF 0,3 m)	5,35 m
ALTURA DOS PICADEIROS DEPTH OF BLOCKS	2,15 m



PROJECT – LS-05

Type - Completion of new construction

Vessel - Passenger Catamaran

Customer - Dersa

Project Length - 6 months

MEASURES:

TOTAL LENGTH: 35.40 m

BREADTH: 9.50m

MOULDED DEPTH: 2.60 m

PROJECT DRAUGHT: 1.60 m

CAPACITY: 450 PAX



PROJECT – FB - Zumbi dos Palmares

Type - Repairment

Vessel - FB - Zumbi dos Palmares

Client - ITS - Salvador

Project Length - 6 months

Conclusion - June/2018

MEASURES:

TOTAL LENGTH: 105.40 m

BREADTH: 18.08 m

MOULDED DEPTH: 3.90 m

PROJECT DRAUGHT: 2.67 m

CAPACITY: 1200 PAX + 185 Vehicles



PROJECT – FB-10

Type - Repairment

Vessel - FB-10 - Ferry Boat

Client - Dersa

Project Length - 6 months

Conclusion - November/2018

MEASURES:

TOTAL LENGTH: 47.40 m

BREADTH: 13.20 m

MOULDED DEPTH: 1.95 m

PROJECT DRAUGHT: 1.00 m

CAPACITY: 200 PAX + 40 STD CAR



PROJECT – INC-002

Type - New Construction

Vessel - "Ari Dias da Silva" - Ferry Boat

Client - Prefeitura de Eldorado/SP

Project Length - 4 months

Conclusion - October/2019

MEASURES:

TOTAL LENGTH: 10.00 m

BREADTH: 15.00 m

MOULDED DEPTH: 1.20 m

PROJECT DRAUGHT: 1.02 m

CAPACITY: 28 pax + 6 STD CAR



PROJECT – INC-001

Type - New Construction

Vessel - "Zé Moreno" - Ferry Boat

Client - Prefeitura de Campina da Lagoa/PR

Project Length - 4 months

Conclusion - November/2019

MEASURES:

TOTAL LENGTH: 25.00 m

BREADTH: 6.77 m

MOULDED DEPTH: 1.20 m

PROJECT DRAUGHT: 0.66 m

CAPACITY: 12 PAX + 3 STD CAR + 6 MOTOS



PROJECT - NGI - Jumboration x Blisterization

Type - Rebuild

Vessel - "Santa Catarina X" - Ferry Boat

Client - NGI Travessias/SC

Project Length - 6 months

Conclusion - March/2020

MEASURES:

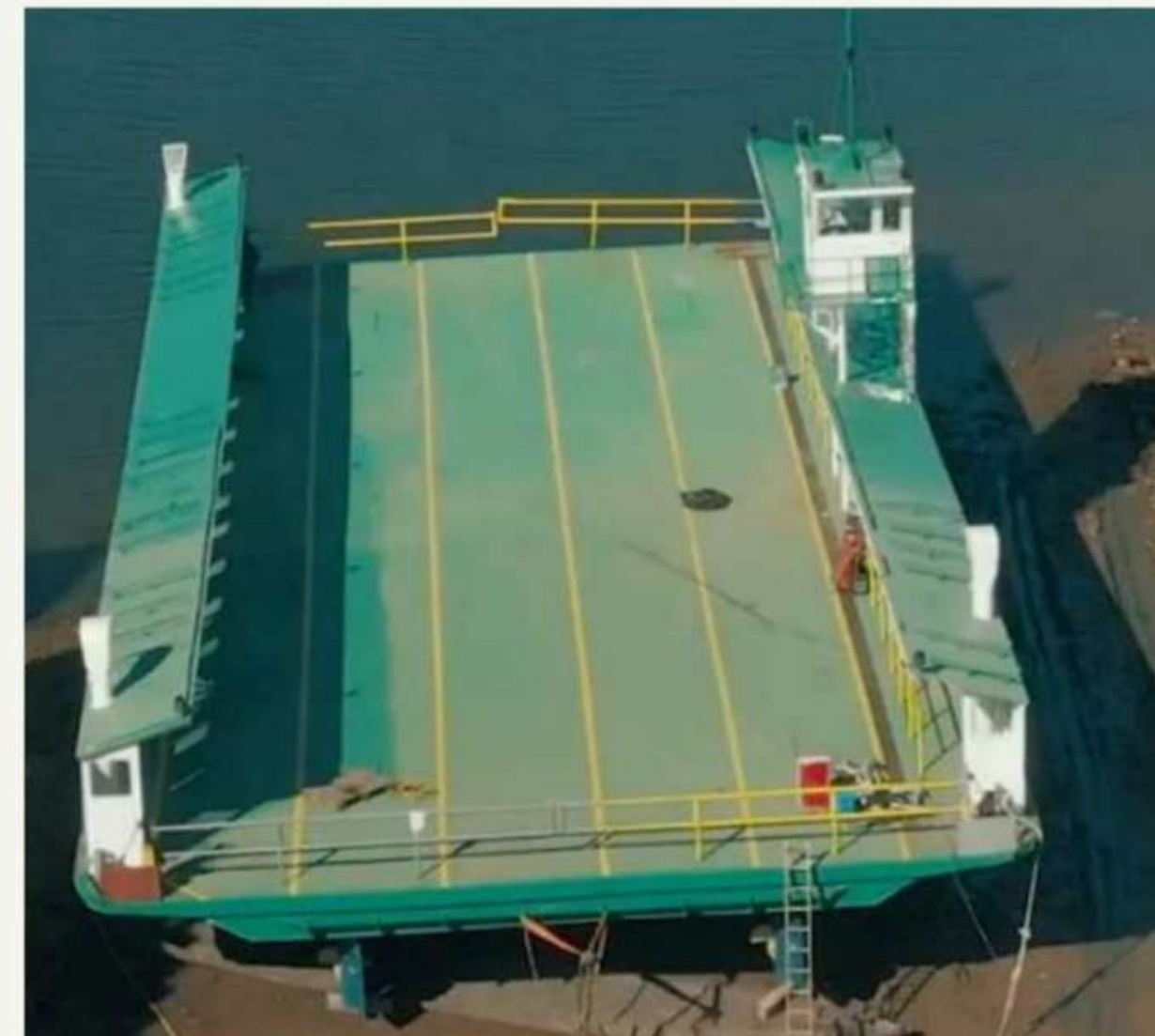
TOTAL LENGTH: 34.00 m

BREADTH: 14.00 m

MOULDED DEPTH: 1.70 m

PROJECT DRAUGHT: 1.00 m

CAPACITY: 35 CARS



PROJECT – FUNBIO

Type - General Repair

Vessel - "Soloncy Moura" - Survey Vessel

Client - FUNBIO/SC

Project Length - 8 months

Conclusion - Jan/2021

MEASURES:

TOTAL LENGTH: 26.00 m

BREADTH: 7.90 m

MOULDED DEPTH: 3.60 m

PROJECT DRAUGHT: 2.80 m



PROJECT — LS03 — General Repair

Type - Complete Naval Repair

Vessel - "LS03" - Passenger Catamaran

Client - Dersa/SP

Project Length - 8 months

Conclusion - December/2020

MEASURES:

TOTAL LENGTH: 31.00 m

BREADTH: 9.50 m

MOULDED DEPTH: 195 m

PROJECT DRAUGHT: 1.15 m

CAPACITY: 370 PAX



PROJECT - EMAE - General Repair

Type - Complete Naval Repair

Vessel - "Metálica I e Atracadouros"

Client - EMAE/SP

Project Length - 8 months

Conclusion - Set/2021

MEASURES:

TOTAL LENGTH: 25.00 m

TOTAL LENGTH (W/RAMP): 28.70 m

BREADTH: 13.52 m

MOULDED DEPTH: 1.34 m

PROJECT DRAUGHT: 0.45 m



PROJECT - IEPHA 1 IPHAN - Restoration - General Repair

Type - Complete Naval Repair

Vessel - "Benjamim Guimarães" - Passengers

Client - Prefeitura de Pirapora / MG

Project Length - 10 months

Conclusion - October/2021

MEASURES:

TOTAL LENGTH: 44.00 m

BREADTH: 7.90 m

MOULDED DEPTH: 1.21 m

PROJECT DRAUGHT: 0.733 m

CAPACITY: 240 PAX



PROJECT - PAICARA - General Repair

Type - Complete Naval Repair

Vessel - "Speedboat Paicar " - Passengers

Client - Departamento Hidrovi rio de S o Paulo

Project Length - 4 months

Conclusion - May/2022

MEASURES:

TOTAL LENGTH: 32.48 m

BREADTH: 14.00 m

MOULDED DEPTH: 2.86 m

PROJECT DRAUGHT: 2.02 m

CAPACITY: 733 PAX



PROJECT - FB 17 - General Repair

Type - Complete Naval Repair

Vessel - "Ferry Boat" - Passengers and Vehicles

Client - Departamento Hidroviário de São Paulo

Project Length - 4 months

Conclusion - August/2022

MEASURES:

TOTAL LENGTH: 49.00 m

BREADTH: 11.90 m

MOULDED DEPTH: 2.10 m

PROJECT DRAUGHT: 1.56 m

CAPACITY: 50 Standard/small cars



PROJECT - DER WORKS - General Repair

Type - Complete Naval Repair

Vessel - 03 units of "Ferry Boats" - Passengers and Vehicles

Client - Departamento de Estradas e Rodagem - DER

Project Length - 2 months per vessel

Conclusion - August/2022

MEASURES:

TOTAL LENGTH: 40.00 m

BREADTH: 20.00 m

MOULDED DEPTH: 2.20 m

PROJECT DRAUGHT: 1.60 m



PROJECT - DER WORKS - Construction Berths

Type - Complete Naval Repair

Vessel - "Floating Dock"

Client - Departamento de Estradas e Rodagem - DER

Project Length - 3 months

Conclusion - August/2022

MEASURES:

TOTAL LENGTH: 40.00 m

BREADTH: 9.00 m

MOULDED DEPTH: 1.80 m

PROJECT DRAUGHT: 0.90 m

WEIGHT: 116 tons of steel



VESSEL MAINTENANCE - INTERNATIONAL TRAVESSIAS SALVADOR

Fleet - 8 Ferry Boats

Salvador/BA - Ilha de Itaparica/BA Crossing

Preventive and corrective maintenance/class docking



VESSEL MAINTENANCE - INTERNACIONAL MARÍTIMA - SÃO LUÍS/MA

Fleet - 5 Ferry Boats

Ferry Boats for cars and passengers

Preventive and corrective maintenance/class docking

Ponta da Espera - Cujupe Crossing



Professionals

Vessels built by the Board and Technical Team



“Line Handling”



Azimuth Tugboats



Oil collection
vessels



Granary Ships



“Fast Supplier”



Passenger Catamaran

Professionals

Vessels built by the Board and Technical Team



Oil well
stimulator vessel



Container Ships



Platform support
Vessels



Floating Dock



Ferry Boat

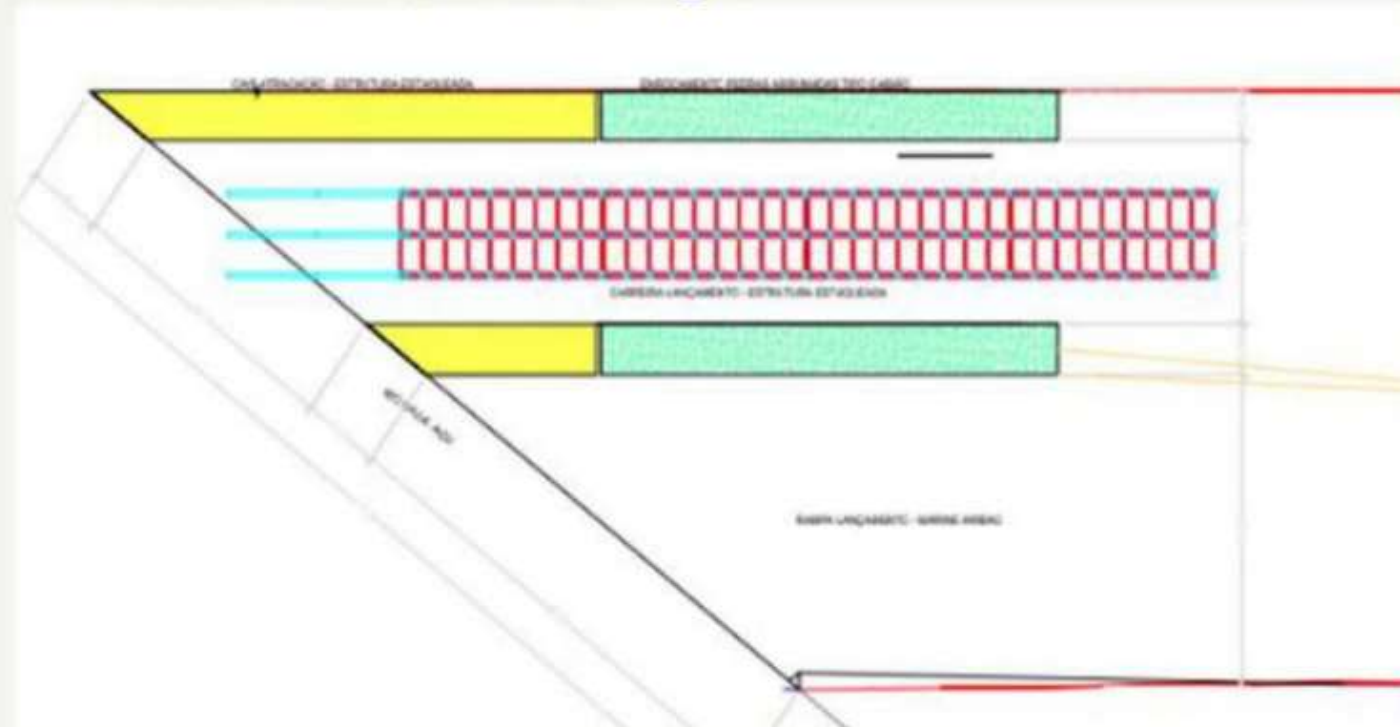


“Anchor Handling Tug Supply”

Investment in Progress

Shipyard facilities

Launching career and mooring pier -
2500 ton x 6.00 m draught



Air bag launch system up to 3500 tons



New assembly shed
- L 90,00 m x W 34,00 m x A 20,00 m



New assembly shed structure





Company



BATE VENTO

With more than 28 years of experience, we are the biggest specialist in sailing and motor catamarans in the country. We have one of the oldest shipyards in Brazil whose production is entirely dedicated to multihulls. In addition to sailboats, we produce sails and motor catamarans.

Our Services:

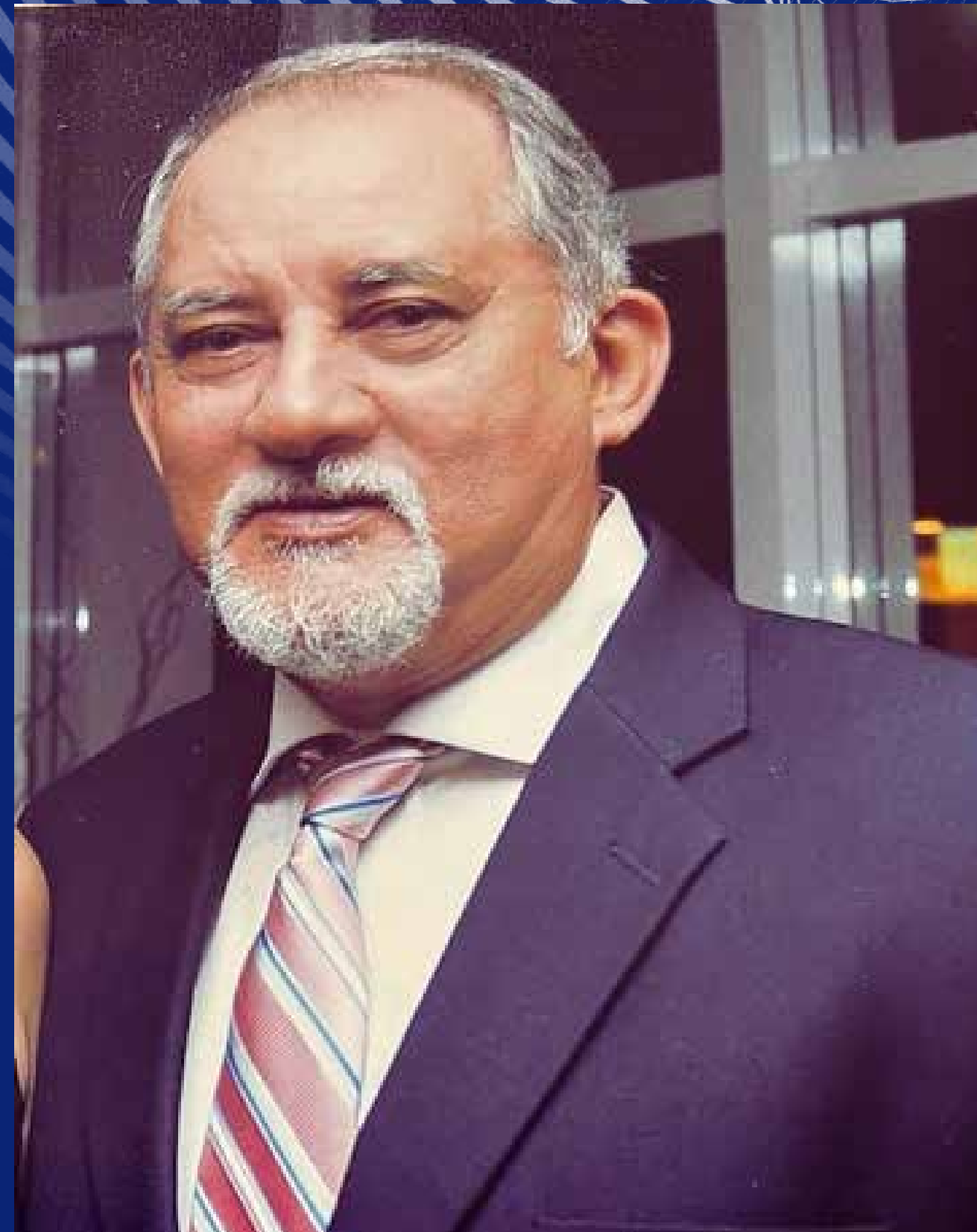
- Creation of Vessels projects
- Naval Construction
- Naval Maintenance
- Accessories



Leadership



Luiz Carlos
CHAIRMAN



Nilson Ferraz
CEO



Cristiano Fernandes
COO

Executive Chart

FAMILY COUNCIL

INDEPEDENT
AUDIT

ADMINISTRATION
COUNCIL

FISCAL
COUNCIL

INTERNAL
AUDIT

CEO

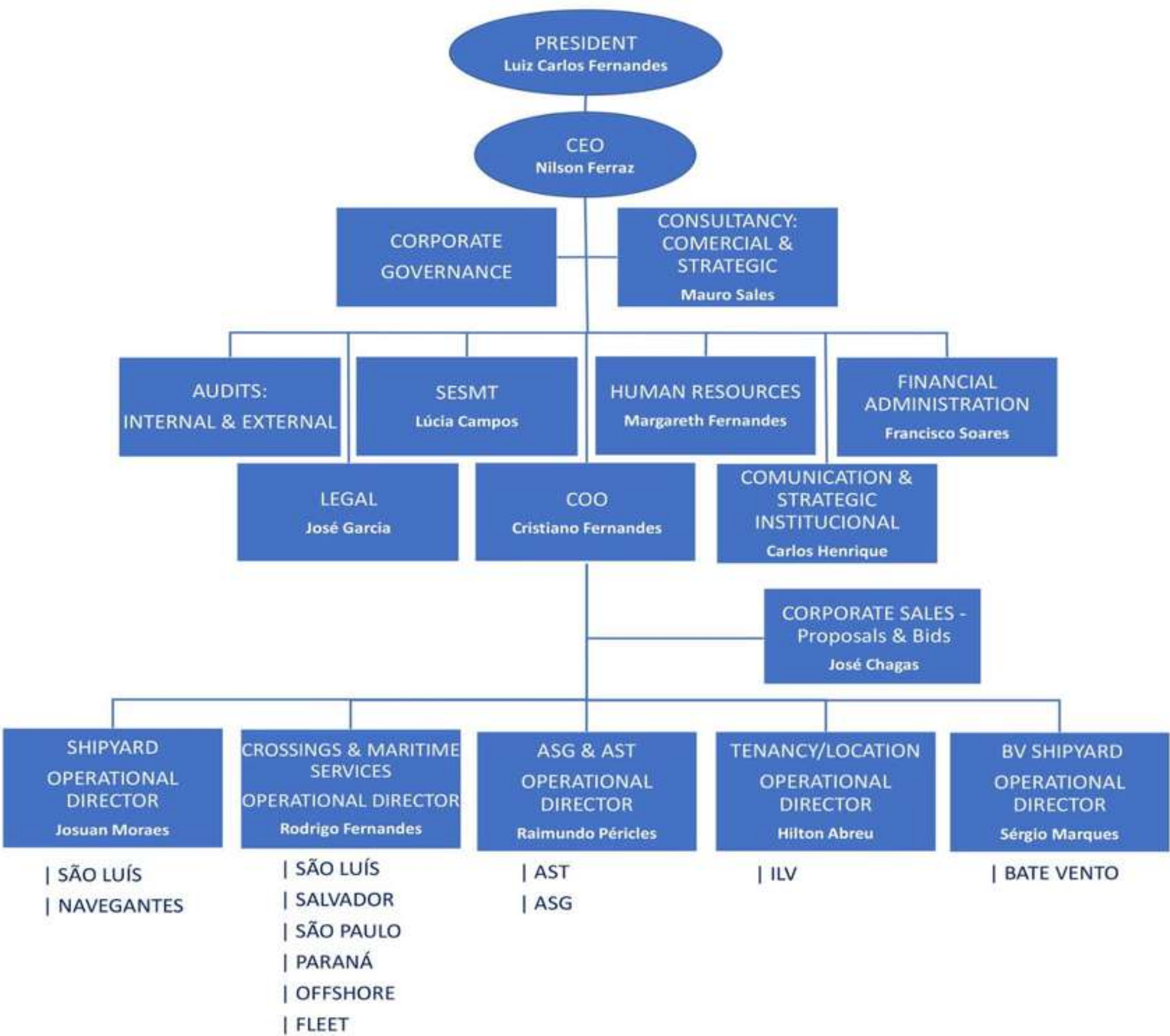
CONSULTANCIES

COO &
CORPORATE
DIRECTORS

Operational Chart

CORPORATE GOVERNANCE

STRUCTURE MODEL



OBS: Each Operational Director in his area is responsible for delivering services and maintaining customers, in addition to prospecting for new customers and contracts with cooperation and support from corporate sales department.

Fleet — 30 vessels (own)

INTERNACIONAL MARITIMA'S VESSELS FLEET										
ITEM	TYPE	NAME	SERVICE	LENGTH	BREADTH	MOULDED DEPTH	DRAUGHT	ENGINE	LOAD	TRACTION
01	Tugboat	Inter I (FT)	Port/Maritime Support	16,88	4,93	1,80	1,63	1X380 HP	N/A	3,00 Ton
02	Tugboat	Inter II	Port/Maritime Support	18,00	5,58	2,42	2,05	2X380 HP	N/A	5,30 Ton
03	Tugboat	Inter III (FT)	Port Support	12,50	4,10	1,30	0,90	1X280 HP	N/A	2,5 Ton
04	Tugboat	Inter IV	Port Support	11,00	3,25	1,23	0,90	1X240 HP	N/A	2,5 Ton
05	Tugboat	Inter V (FT)	Port Support	11,50	3,20	1,32	0,90	1X280 HP	N/A	2,5 Ton
06	Tugboat	Inter VI	Port Support	11,40	3,10	2,80	2,10	1X380 HP	N/A	3,00 Ton
07	Tugboat	Inter VII	Port/Maritime Support	24,46	6,60	3,50	2,78	2X600 HP	N/A	9,20 Ton
08	Tugboat	Inter VIII	Port/Maritime Support	16,00	4,00	1,90	1,50	2X370 HP	N/A	6,01 Ton
09	Tugboat	INTER-IX	Port Support	12,00	3,50	1,80	1,25	2X199 HP	N/A	3,00 Ton
10	Tugboat	INTER-X	Port Support	12,00	3,50	1,80	1,25	2X199 HP	N/A	3,00 Ton
11	Tugboat	Inter-XI	Port Support	33,80	8,00	4,08	3,47	2X720 HP	N/A	16,00 Ton
12	Tugboat	Inter-XII	Port Support	12,00	3,50	1,80	1,00	2X290 hp	N/A	4,02 Ton
13	Tugboat	Inter-XIII	Port Support	12,00	3,50	1,80	1,25	2X260 HP	N/A	4,06 Ton
14	Tugboat	Inter-XIV (FT)	Port/Maritime Support	17,81	5,20	2,20	1,86	2X380 HP	N/A	5,10 Ton
15	Tugboat	Inter-XV (FT)	Port/Maritime Support	23,00	6,00	3,00	2,60	2X855 HP	N/A	16,20 Ton
16	Tugboat	Inter-XVI	Port Support	11,50	3,25	1,35	1,00	1X280 HP	N/A	N/A
17	Crew boat	Imperial Penedo (FT)	Port/Maritime Support	28,00	6,40	2,90	1,25	2X660 HP	42 pax	N/A
18	Crew boat	Palmares-I (FT)	Port/Maritime Support	23,77	5,64	3,01	1,85	2X750 HP	30 pax	N/A
19	Speedboat	Luiza (FT)	Port Support	13,40	4,30	1,20	0,70	2X208 HP	8 pax	N/A
20	Speedboat	São Sebastião-I (FT)	Port Support/Passengers	14,66	3,78	2,44	1,00	2X196 HP	=\=\=\=	N/A
21	Raft	Inter B-I (FT)	Cargo Trasportation/ Support	42,00	15,50	3,00	2,52	N/C	1200 ton	N/A
22	Raft	Inter B-II (FT)	Cargo Trasportation/ Support	42,00	15,50	3,00	2,52	N/C	1200 ton	N/A
23	Raft	Inter B-III (FT)	Cargo Trasportation/ Support	42,00	18,00	1,95	1,66	N/C	800 ton	N/A
24	Raft	Inter B-VIII	Cargo Trasportation/ Support	37,00	16,80	2,40	2,04	N/C	880 ton	N/A
25	Raft	BGL-2	Launch Jackets/ Support	152,00	36,60	9,50	6,08	N/C	28000 ton	N/A
26	Ferry-Boat	Itauna (FT)	Transportation Passengers / Vehicles	53,15	10,00	1,50	0,92	2X600 HP	Pax + Vehyc	N/A
27	Ferry-Boat	Alcântara	Transportation Passengers / Vehicles	55,23	12,00	2,62	1,68	2X600 HP	Pax + Vehyc	N/A
28	Ferry-Boat	Cidade de Cururupu	Transportation Passengers / Vehicles	42,00	12,00	2,50	1,86	2X600 HP	Pax + Vehyc	N/A
29	Ferry-Boat	Baía de São Marcos I	Transportation Passengers / Vehicles	67,81	14,00	2,36	2,29	2x600 + 1x380HP	Pax + Vehyc	N/A
30	Ferry-Boat	Cidade de Pinheiro	Transportation Passengers / Vehicles	54,56	12,80	2,04	1,97	2X600 HP	Pax + Vehyc	N/A



Contact

www.internacionalmaritima.com.br



OPERATION AND MAINTENANCE OFFICES/SHIPYARD

Av. Portugueses, nº 0, Anexo
Modulo Zi Marítimo, Itaqui, São
Luís-MA-Brazil 65.085-582

HEAD OFFICE

Av. Getúlio Vargas, 42,
Monte Castelo, São Luís- MA
Brazil 65020-300

E-mails

CHAIRMAN: luiz@internacionalmaritima.com.br
CEO: nilson.ferraz@grupointeratlantica.com.br
COO: cristianofernandes@grupoatlantica.com.br

PHONE

+55 (98) 99116-3900
+55 (98) 98135-6326
+55 (98) 98819-0383